

1939 • 1940

Keystone

TOY CATALOGUE

KEYSTONE MFG. CO., BOSTON, MASS.

"JUNIOR MOVIEGRAPHS" 16 M.M.

REG. U. S. PAT. OFFICE

1939-1940 THE BIGGEST LINE OF MOVIEGRAPH JUVENILE PROJECTORS

Again Keystone takes the lead in presenting a larger and finer selection of Juvenile Projectors, utilizing its vast experience as the world's oldest manufacturers of junior projection equipment.

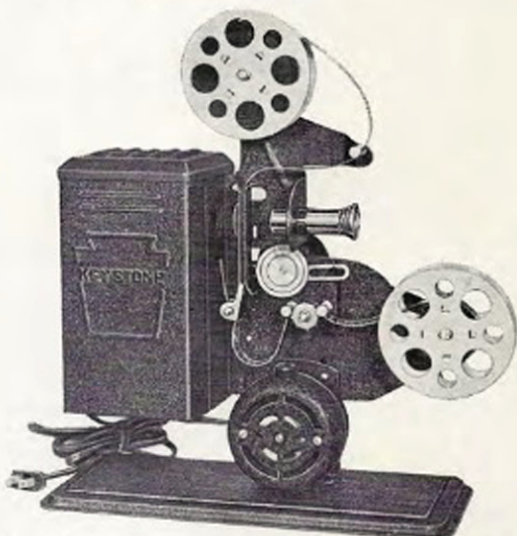
- 400-FOOT FILM CAPACITY
- COVERED GEARS
- PROJECTION WITH COLOR FILTERS
- BUILT IN SPEED CONTROL MOTOR
- ANGLE PROJECTION
- FULLY EQUIPPED WITH TWO SPOOLS
- FLARED LENS
- FRAMER
- BELT RETAINERS—NO LOSS OF BELTS
- GEARED REWIND TO TOP SPOOL
- CORD AND PLUG ATTACHED

For accuracy of performance and ease of operation "Junior Moviegraphs" are unequalled. Dealers will benefit by the steadily increasing general interest for projection and photography by young and old.



**MODEL E-725 — Hand Crank —
100-foot Capacity — 16 M.M.**

Hand crank; 75-watt lamp; two 100-foot reels; weight 4 lbs., 15 ozs.; packed individually one dozen in corrugated carton.



**MODEL E-829 — A. C. Motor with Switch —
200-foot Capacity — 16 M.M.**

With A. C. motor, including switch; two 100-foot reels; 125-watt lamp; tilting device; weight 6 lbs., 16 ozs.; packed individually one half dozen per carton.



**MODEL E-839 — 16 M.M. — Universal Motor —
A. C. or D. C. — 200-foot Capacity**

Universal motor; speed control; concentrated filament; 125-watt lamp; two 100-foot spools; tilting device; weight 7 lbs. each; packed individually one half dozen in corrugated carton.

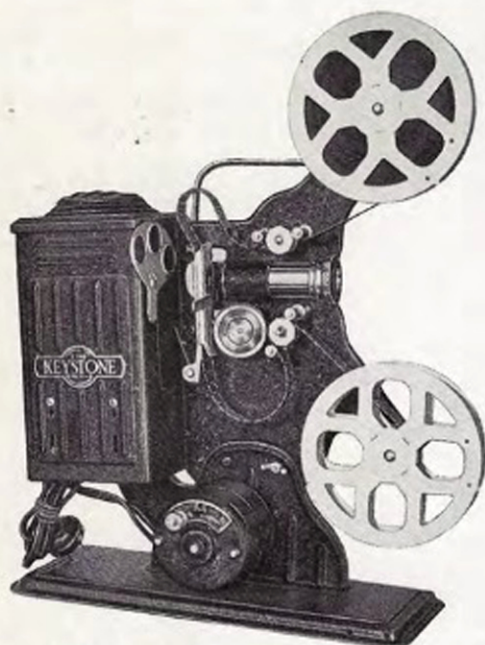


**MODEL E-743 — A. C. Motor — 15-minute Show
—No Lost Belts—Switch in Motor—16 M.M.**

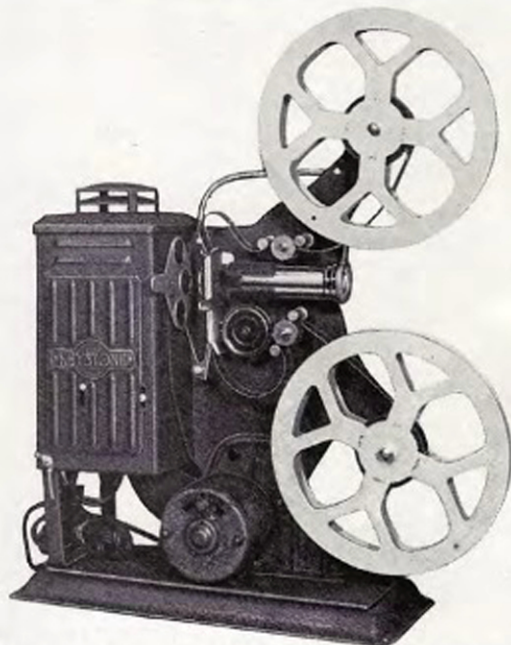
Two 200-foot reels; capacity 400 feet; bell shaped lens; concentrated filament bulb, 135-watt; condenser lens; swivel for angle projection; motor rewind; weight 9 lbs.; packed individually one half dozen in corrugated carton.

"JUNIOR MOVIEGRAPHS" 16 M.M.

REG. U. S. PAT. OFFICE



**All
Models
on this
Page
Have
The
NO
LOST
BELT
Feature**

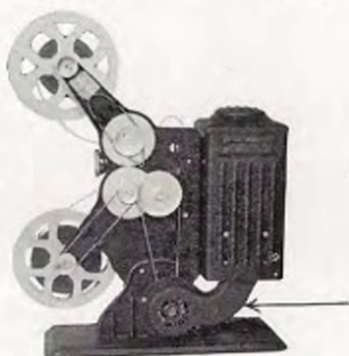


MODEL E-848—Universal Motor—Forced Draft Thru Lamphouse—Built in Speed Control—No Lost Belts—3-Color Attachment—16 M.M.

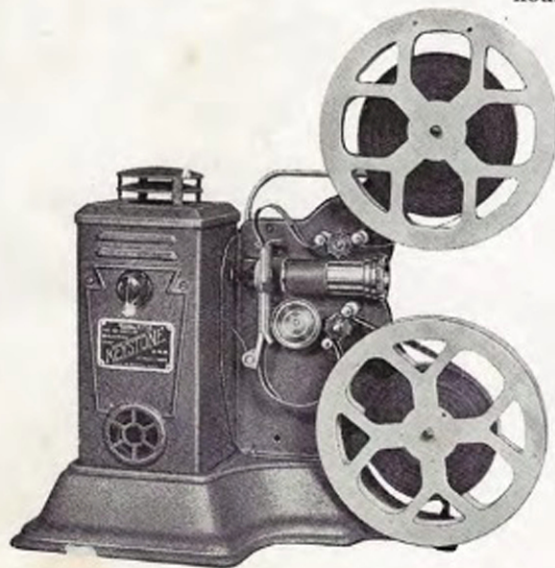
Universal motor; built in speed control; ventilating system for motor through to lamp-house; two 200-foot metal reels; capacity 400 feet; reflector; three-color attachments; bell shaped flare lens; concentrated filament, 135-watt bulb; condenser lens; swivel for angle projection; spring belt holders; motor rewind; weight 8 lbs., 7 ozs.; packed individually one half dozen in corrugated carton.

MODEL E-853 — MORE Brilliancy! — Tubular Projection Bulb — Forced Ventilation Thru Lamphouse — Built in Speed Control — No Lost Belts — 3-Color Attachment — 16 M.M.

Universal motor; built in speed control; ventilating system; two 400-foot metal reels; reflector; carrying handle; three-color attachment; condenser lens; spring belt retainers to prevent loss of belts; tubular projection lamp, 135-watt; weight 9 lbs., 3 ozs.; packed individually one half dozen in corrugated carton.



Forced Draft Thru Lamp-house Models E-853—E-848



MODEL D-759 — 16 M.M. — Enclosed Gear Frame — 200-Watt Tubular Bulb — Cast Iron Base — Built in Ventilation System — Screw Tilt Device — 400-Foot Reels

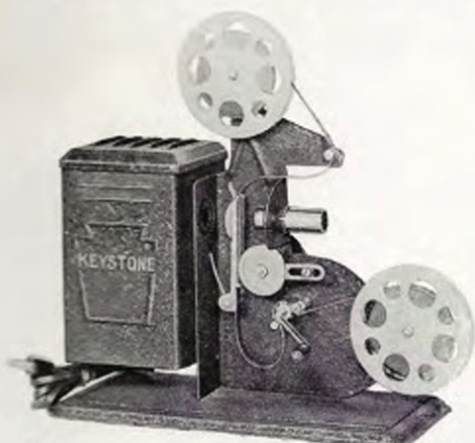
Universal motor; speed control; cast iron base; shutter; separate switch for lamp; 200-watt tubular projection lamp; ventilating system; condenser lens; spring belt retainers to prevent loss of belts; 1" diameter projection lens; two 400-foot metal reels; weight 12 lbs.; packed individually four in corrugated carton.

KEYSTONE IS THE FIRST TO MARKET 8 M.M. JUVENILE PROJECTORS

8 M.M.

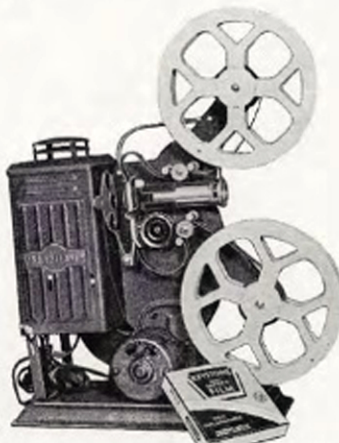
A substantial saving in the cost of film — 50 feet of 8 M.M. film will give a show equivalent to 100 feet of 16 M.M. film — an additional saving of about half of the cost of 16 M.M. in the price of the film itself. While the picture area of the 8 M.M. film is not quite as bright as the 16 M.M. — the difference in the cost of film makes the use of 8 M.M. equipment worthwhile to many users.

8 M.M.



MODEL E-885 — Hand Crank
—75-watt Lamp—Two 100-foot Reels

Weight 4 lbs., 15 ozs.; packed individually one dozen in corrugated carton.



MODEL E-896 — Universal Motor — Ventilating System
— Speed Control

Two 400-foot metal reels; reflector; carrying handle; three-color attachment; condenser lens; spring belt retainers; 1" diameter projection lens; tubular projection lamp; 135-watt; weight 9 lbs., 3 ozs.; packed individually one half dozen in corrugated carton.

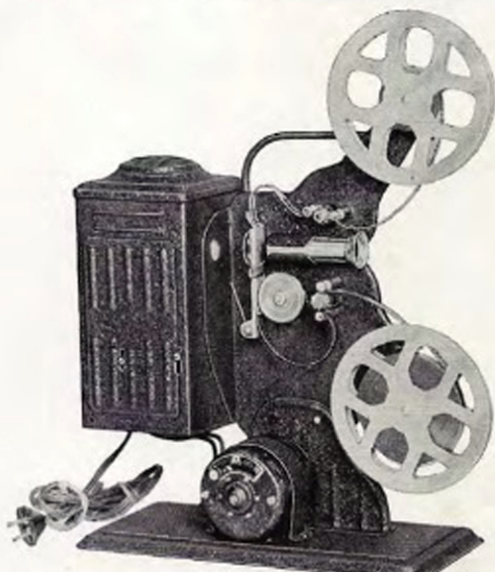


MODEL D-8 — Cast Iron Base
—Speed Control — Universal Motor—200-watt Tubular Projection Lamp

Forced draft ventilating system; condenser lens; spring belt retainers to prevent loss of belts; quality projection lens; two 400-foot metal reels; reflector; weight 12 lbs.; packed individually four in corrugated carton.



MODEL E-889 — 8 M.M. — A. C. Motor — 125-watt Lamp — Two 100-foot Reels — Switch
Tilting device; weight 6 lbs., 15 ozs.; packed individually one half dozen per carton.



MODEL E-891—8 M.M.—Universal Motor—Two 200-foot Reels—400-foot Capacity—Switch
Bell shaped flare lens; concentrated filament bulb with 135-watt rating; condenser lens; swivel for angle projection; spring belt holders; reflector; motor rewind; weight 9 lbs.; packed individually one half dozen in corrugated carton.

KEYSTONE 16 and 8 MILLIMETER MOVIE FILMS

SEND FOR COMPLETE CATALOGUE OF FILMS

Send for Separate List of "Popeye" and "Betty Boop" 8 and 16 m.m. Films

16 MILLIMETER

Mickey Mouse—100-Ft.—16 M.M.

- 901-A—Mickey's Barn Dance
- 902-A—Mickey's Finish
- 903-A—Mickey's Olympic Games
- 904-A—Mickey's Bicycle Race
- 905-A—Mickey's Barnyard Melodies
- 906-A—Mickey's Mad Dog
- 907-A—Mickey Goes Hunting
- 908-A—Mickey the Duck Hunter

Mickey Mouse—50-Ft.—16 M.M.

- 926-Z—Mickey's Musicians
- 927-Z—Mickey's Marathon
- 928-Z—Mickey's Jungle Pals
- 929-Z—Mickey's Best Girl
- 930-Z—Mickey's Turkey
- 931-Z—Mickey's Playmates
- 932-Z—Mickey the Castaway
- 933-Z—Mickey and the Gorilla

Mickey Mouse—25-Ft.—16 M.M.

- 951-Y—Mickey's Daffy Tunes
- 952-Y—Mickey's Narrow Escape
- 953-Y—Mickey's Wild Ducks
- 954-Y—Mickey's Birthday Cake
- 955-Y—Mickey's Boat Ride
- 956-Y—Mickey the Juggler
- 957-Y—Mickey's Banana Lunch
- 958-Y—Mickey to the Rescue

Mickey Mouse—10-Ft.—16 M.M.

- 976-X—Mickey's Comeback
- 977-X—Mickey's Rehearsal
- 978-X—Mickey the Band Leader
- 979-X—Mickey's Playful Musicians
- 980-X—Mickey Makes a Date
- 981-X—Mickey's Mishaps
- 982-X—Mickey's Surprise
- 983-X—Mickey's Party

Donald Duck—100-Ft.—16 M.M.

- 914-A—Donald Duck—The Ham Actor
- 915-A—Donald Duck—Getting the Hook

Donald Duck—50-Ft.—16 M.M.

- 938-Z—Donald Duck—Stage Struck
- 939-Z—Donald Duck—Busting Bubbles
- 940-Z—Donald Duck—Donald's Exit

Oswald Rabbit—100-Ft.—16 M.M.

- 1-A—Dog Team Race
- 4-A—Alaska Mush
- 5-A—Play Ball
- 6-A—The Duck's Birthday

Oswald Rabbit—50-Ft.—16 M.M.

- 27-Z—Kitchen Antics
- 28-Z—Home Run Oswald
- 29-Z—The Speed Cop
- 31-Z—House of Magic

Oswald Rabbit—25-Ft.—16 M.M.

- 51-Y—Oswald—In Alaska
- 52-Y—Oswald—The Barber
- 53-Y—Oswald—Snowed Under
- 54-Y—Oswald—In Fairyland

Shirley Temple—100-Ft.—16 M.M.

- 1130—Shirley Temple—At Home

Shirley Temple—50-Ft.—16 M.M.

- 1120—Shirley Temple—At Home
- 1121—Shirley Temple—Bedtime

Shirley Temple—25-Ft.—16 M.M.

- 1101—Shirley Temple—At Home (Episode 1)
- 1102—Shirley Temple—At Home (Episode 2)
- 1103—Shirley Temple—Bedtime
- 1104—Shirley Temple—Herself

Charlie Chaplin—200-Ft.—16 M.M.

- 2014—Charlie Chaplin—In Tough Luck
- 2015—Charlie Chaplin—In the Dumbbell

Charlie Chaplin—100-Ft.—16 M.M.

- 1751—Charlie Chaplin—The Stolen Umbrella
- 52101—Charlie Chaplin—The Dentist
- 52102—Charlie Chaplin—Filling a Prescription
- 52103—Charlie Chaplin—Laughing Gas
- 5211—Charlie Chaplin—I am a King
- 5212—Charlie Chaplin—The Window Washer

Charlie Chaplin—50-Ft.—16 M.M.

- 1701—Charlie Chaplin—Skip the Puddles
- 1703—Charlie Chaplin—Ladies' Man
- 4211—Charlie Chaplin—Capturing the Robber
- 4212—Charlie Chaplin—The Mighty Hunter
- 4213—Charlie Chaplin—The Cave Men
- 4214—Charlie Chaplin—Assistance Wanted

Charlie Chaplin—25-Ft.—16 M.M.

- 16389—Charlie Chaplin—Free Samples at the Drug Store
- 16392—Charlie Chaplin—Making Friends
- 3211—Charlie Chaplin—Hoola-Hoola Dance
- 3212—Charlie Chaplin—The Janitor
- 3213—Charlie Chaplin—Back Stage
- 3214—Charlie Chaplin—The Scrapper

Charlie Chaplin—10-Ft.—16 M.M.

- 16366—Charlie Chaplin—The Rescue
- 16368—Charlie Chaplin—Charlie's Dream
- 16369—Charlie Chaplin—Saving Charlie
- 16372—Charlie Chaplin—Having Fun

Western—100-Ft.—16 M.M.

- 5317—Ken Maynard—Saving the Squatter
- 53106—William S. Hart—The Daring Rescue
- 5311—Tom Mix—Using His Brains
- 5313—Tom Mix—Who's the Boss

Western—50-Ft.—16 M.M.

- 4311—Tom Mix—The Hasty Exit
- 43101—Wm. S. Hart—The New Boss
- 4312—Tom Mix—Ransomed
- 4313—Tom Mix—Shootin' Up the Town

Western—25-Ft.—16 M.M.

- 16394—Wm. S. Hart—Rescuing the Girl
- 16406—Tom Mix—A Thrilling Movement
- 1629—Tom Mix—Fire Cracker Kid
- 1649—Tom Mix—The Escape

Western—10-Ft.—16 M.M.

- 16373—Wm. S. Hart—Himself
- 16376—Wm. S. Hart—The Outlaw Chief
- 16416—Wm. S. Hart—Two Gun Bill
- 16417—Wm. S. Hart—A Capture and Escape

Travelogues—100-Ft.—16 M.M.

- 1801—Niagara Falls
- 1802—Cairo, Egypt
- 1803—Picturesque Japan
- 1804—Spain
- 1805—Turkey (Asia) and Constantinople
- 1806—Through Dauphine (France)
- 1807—Syria
- 1808—Ceylon—Devil Dancers and Buddhas
- 1809—Milan (Italy)
- 1810—Ruins of Egypt
- 1811—Hong-Kong and Canton, China
- 1812—City of Algier
- 1813—Venice (Italy)

Cartoon Comedy—200-Ft.—16 M.M.

- 2001—Bobby Bumps—On Fishing Trip
- 2005—Police Dogs—Turns Nurse
- 2007—Judge Rummy—A Fitting Gift
- 2008—Out of the Inkwell—Men of China
- 2010—Farmer Alfalfa—In New York

Cartoon Comedy—100-Ft.—16 M.M.

- 1760—Out of the Inkwell—Tantalizing Fly
- 1766—Goodrich Dirt—Coin Collector
- 1770—Hot Dog Series—Pete's Party
- 1773—Us Fellers—Dud, Circus Performer
- 1777—Farmer Alfalfa—Revenge
- 1778—Judge Rummy—Joy Rider
- 1783—Jerry on the Job—Tale of a Wag
- 1790—Bobby Bumps—On the Doughnut Trail
- 1791—Krazy Kat—Family Affair
- 5112—Mutt and Jeff—The Bull Fighter

Cartoon Comedy—50-Ft.—16 M.M.

- 1716—Jerry on the Job—The Candy Kid
- 4112—Krazy Kat—Best Mouse Loses
- 1721—Krazy Kat—The Great Cheese Robbery
- 1615—The Foxy Farmer
- 4114—Mutt and Jeff—The Champion
- 1727—Farmer Alfalfa—Sees New York
- 1728—Us Fellers—Old Swimming Hole
- 1729—Out of the Inkwell—Chinaman

Cartoon Comedy—25-Ft.—16 M.M.

- 3112—Krazy Kat—Kats is Kats
- 1650—Billy the Goat—"Whoopie"
- 3113—Bobby Bumps—On the Road
- 3116—Jerry on the Job—Monkey Business
- 3118—Judge Rummy—On with the Dance
- 3119—Out of the Inkwell—Kangaroo
- 3121—Us Fellers—Dud Makes a Home Run
- 3122—Goodrich Dirt—The Cop

Cartoon Comedy—10-Ft.—16 M.M.

- 21101—Krazy Kat—Beamed with a Brick
- 21102—Bobby Bumps—Chased by the Sultan
- 21103—Jerry on the Job—The Cat Drops Out

8 MILLIMETER

Donald Duck—50-Ft.—8 M.M.

- M914-A—Donald Duck—The Ham Actor
- M915-A—Donald Duck—Getting the Hook

Donald Duck—25-Ft.—8 M.M.

- M938-Z—Donald Duck—Stage Struck
- M939-Z—Donald Duck—Busting Bubbles
- M940-Z—Donald Duck—Donald's Exit

Oswald Rabbit—50-Ft.—8 M.M.

- M 1-A—Dog Team Race
- M 4-A—Alaska Mush
- M 5-A—Play Ball

Oswald Rabbit—25-Ft.—8 M.M.

- M27-Z—Kitchen Antics
- M28-Z—Home Run Oswald
- M29-Z—The Speed Cop

Mickey Mouse—50-Ft.—8 M.M.

- M901-A—Mickey's Barn Dance
- M902-A—Mickey's Finish
- M903-A—Mickey's Olympic Games

Mickey Mouse—25-Ft.—8 M.M.

- M926-Z—Mickey's Musicians
- M927-Z—Mickey's Marathon
- M928-Z—Mickey's Jungle Pals

Cartoon Comedy—100-Ft.—8 M.M.

- M 2001—Bobby Bumps—On Fishing Trip
- M 2005—Police Dogs—Turns Nurse
- M 2007—Judge Rummy—A Fitting Gift

Charlie Chaplin—100-Ft.—8 M.M.

- M 2014—Charlie Chaplin—In Tough Luck
- M 2015—Charlie Chaplin—In the Dumbbell

Charlie Chaplin—50-Ft.—8 M.M.

- M 1751—Charlie Chaplin—The Stolen Umbrella
- M 5211—Charlie Chaplin—I am a King
- M 5213—Charlie Chaplin—The Property Man

Western—50-Ft.—8 M.M.

- M53106—Wm. S. Hart—The Daring Rescue
- M 5311—Tom Mix—Using His Brains
- M 5317—Ken Maynard—Saving the Squatter

Travelogues—50-Ft.—8 M.M.

- M 1801—Niagara Falls
- M 1802—Cairo, Egypt
- M 1803—Picturesque Japan
- M 1804—Spain

Cartoon Comedy—50-Ft.—8 M.M.

- M 1760—Out of the Inkwell—Tantalizing Fly
- M 1766—Goodrich Dirt—Coin Collector
- M 1772—Hot Dog Series—Dog Gone It
- M 1782—Jerry on the Job—Without Coal
- M 1789—Bobby Bumps—Surf Rider

Miscellaneous—50-Ft.—8 M.M.

- M16178—Nature Study—The Birth of a Bean
- M16179—Nature Study—Marvels of a Trained Fly
- N16175—U. S. Navy—Air Fleet in Action
- M16176—U. S. Navy—Battleships Attack Enemy

Shirley Temple—50-Ft.—8 M.M.

- M 1130—Shirley Temple—At Home

Charlie Chaplin—25-Ft.—8 M.M.

- M 1701—Charlie Chaplin—Skip the Puddles
- M 1703—Charlie Chaplin—Ladies' Man
- M 4211—Charlie Chaplin—Capturing the Robber
- M 4212—Charlie Chaplin—The Mighty Hunter
- M 4218—Charlie Chaplin—Under Arrest

Western—25-Ft.—8 M.M.

- M43101—Wm. S. Hart—The New Boss
- M 4311—Tom Mix—The Hasty Exit
- M 4312—Tom Mix—Ransomed

Cartoon Comedy—25-Ft.—8 M.M.

- M 1716—Jerry on the Job—The Candy Kid
- M 4112—Krazy Kat—Best Mouse Loses
- M 4114—Mutt and Jeff—The Champion
- M 1729—Out of the Inkwell—Chinaman

Gang Comedy—25-Ft.—8 M.M.

- M 4611—McDougall Alley Gang—Yankee Doodle

Shirley Temple—25-Ft.—8 M.M.

- M 1120—Shirley Temple—At Home
- M 1121—Shirley Temple—Bedtime

Jack Dempsey—25-Ft.—8 M.M.

- M 1732—Jack Dempsey—Series 1-2
- M 1733—Jack Dempsey—Series 3-4
- M 1734—Jack Dempsey—Series 5-6

RADIOPTICANS AND MOVIE ACCESSORIES

FOR PROJECTION OF POSTCARDS — SNAPSHOTS — COLOR PICTURES, ETC.



NO. 421 RADIOPTICAN — Price \$8.50

Because of its superior lenses and illuminants this model yields a sharper and brighter picture. LENS SYSTEM: Double Plano-Convex Lens System. ILLUMINATION: 6 ft. of cord for attaching to any electric light fixture. Sockets for two bulbs. PICTURE HOLDERS: Two holders for standard post cards, etc., are mounted on detachable sliding backs with adjustable holders for pictures up to 6½ inches x 5½ inches (patented) eliminating delay between subjects and preventing light being let into room when loading. COOLING ARRANGEMENTS: Thoroughly ventilated and protected with air spaces. FINISH: Highly baked brown enamel shrivel finish. Sample Cards with each machine.



NO. 411 RADIOPTICAN
Price \$5.00

Equipped with 3½-inch double convex ground and polished lens, two ventilators to keep the housing cool, electric cord, plug, sockets for two bulbs inside body. It is strikingly finished in baked black crystal enamel. SIZE: Length 9¾ in., width 11 in., height 12 in. Sample Card with each machine.



PICTOGRAPH
MODEL 441 — \$16.50

Front Surface Mirrors for accurate optical reflection. 2 Tubular 135-Watt Projection Bulbs. Picture Holder with adjustable guides for pictures up to 4¾ x 5½". Has Ventilation Provision. Projects 48-inch pictures. Carrying Handle. Crystal Bronze Finish. Size 11½ x 10½ x 11¼ high. 3½" Double Element Projection Lens.

JUNIOR PROJECTOR MOVIE ACCESSORIES

NO. 604 — KEYSTONE SCREEN



Made of Masonite surfaced with special aluminum preparation. In wood frame. Size: 22" x 16". Has swivel pieces at the base so that the screen will stand. Each packed in corrugated carton, weight when packed for shipment 3½ lbs.

NO. 607 — KEYSTONE SCREEN

Size 32" x 27" otherwise same as above.

NO. 710 — FILM SPLICER



For mending film breaks, equipped with film cement and simple instructions. Packed small cardboard box.



400' Reel

EXTRA SPOOLS

400-foot steel spool	\$.40 List
400-foot aluminum spool	.60 List
200-foot spool	.35 List
100-foot spool	.20 List
50-foot spool	.15 List



KEYSTONE FILM CEMENT

Keystone Film Cement was especially developed for the splicing of safety film. It contains the highest quality chemicals and is furnished in ½-ounce or 1-ounce bottles.

½-ounce Bottle	\$.20 List
1-ounce Bottle	.35 List



NO. P960 BULB

NO. P960 — BULB

Ordinary house bulbs will not give a good picture in any Projector. Only a clear lamp with concentrated filament and of the proper height that will reflect directly through the lens will give a clear picture under otherwise normal conditions.

When purchasing lamps the best lamp for toy projectors is our No. P960, 30c each For E-853 No. 1060, 50c each

ADULT MOVIE PROJECTORS AND CAMERAS



MODEL A-81 PROJECTOR—16 M.M. 750-watt lamp. Universal Motor, 400-ft. capacity. Satisfactory auditorium projection. Forward and reverse. Rapid motor rewind. Pilot light. Still picture feature. Size of picture: 40" x 52" at a distance of 24 feet. \$69.50.



MODEL A-75 PROJECTOR—16 M.M. 500-watt lamp. Universal Motor drive, F2.5 lens finely ground and polished. Capacity: 400-ft. Die cast construction. High speed rewind. Still picture feature. Size of picture: 40" x 52" at a distance of 24 feet. \$55.00.



MODEL A-72 PROJECTOR—16 M.M. 300-watt lamp. Universal Motor drive, F2.5 lens finely ground and polished. Capacity: 400-ft. Die cast construction. High speed rewind. Size of picture: 40" x 52" at a distance of 24 feet. \$44.50.



16 MILLIMETER MOVIE CAMERAS

Universal focus spring motor, three or seven speeds, daylight loading, beautifully finished, factory guarantee.

- B-1—One-Speed with F3.5 Lens.....\$29.95
- A-3—Three Speeds with F3.5 Lens..... 35.00
- A-3—Three Speeds with F1.5 Lens..... 71.00
- A-7—Seven Speeds with F2.7 Lens..... 44.50
- A-7—Seven Speeds with F1.5 Lens..... 71.00



8 MILLIMETER CAMERAS AND PROJECTORS

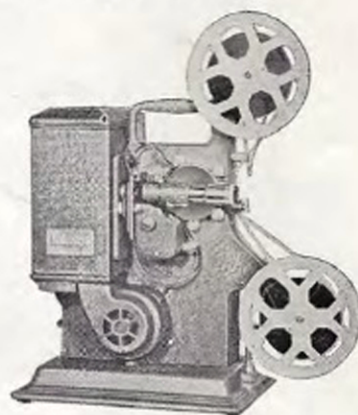
MODEL K-8 CAMERA — \$26.50

8 M.M. pocket size. Finish: bronzed grain. F3.5 Universal focus lens. Weight 1 lb. 12 oz. Interchangeable with F1.9 and F2.7 lenses as well as F3.5—1½" Telephoto Lens. Three speeds, normal, low and slow motion. Direct Vision View Finder. Visual Footage Indicator. Silent winding.

MODEL M-8 PROJECTOR \$39.50

Will project flickerless pictures. With 200-watt T-8 projection bulb and Achromatic Lens which assure sharp brilliancy. Capacity: 200-ft. 8 M.M. film, with motor rewind. Fan cooled ventilation. Sturdy construction. Fully guaranteed.

MODEL R-8 — 500-WATT.....\$55.00



KEYSTONE STROBO-EDITOR

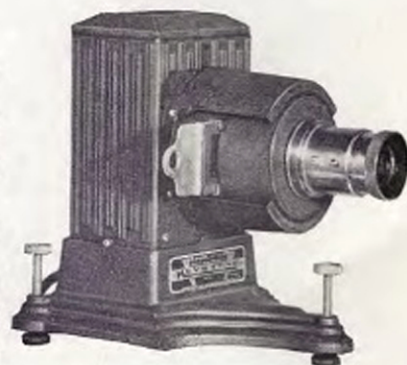
MODEL V-20 — \$36.50

Editing without interference by daylight. A new principle applied to the editing of motion picture film. Equipped with the new Keystone Splicer that eliminates scraping, use of water and assures precision splices. Special Strobe-Lamp synchronized with the film passing through the film aperture.

KEYSTONE SLIDE PROJECTOR

MODEL S-25 — \$29.95

200-watt lamp. Patented heat absorbing unit. Lens: F4.5—5" Wollensak. Glass silvered reflector. Three-piece condenser unit. Cooling chamber. Automatic locating 2" x 2" standard slide holder. Tilting screws. Cast base and die cast lamphouse, equipped with cord, switch and plug. Size of projector: 10½" x 7¾" x 9½" high. Weight: 8 lbs.



MR. DEALER:

More Than 60 Million People

WILL VISIT THE NEW YORK WORLD'S FAIR AND MANY OF THESE WILL "SEE" KEYSTONE CAMERAS AND PROJECTORS IN OPERATION AT THE KEYSTONE CAMERA EXHIBIT IN THE COMMUNICATIONS BUILDING, AND

More Than 30 Million People

WILL "READ" ABOUT KEYSTONE CAMERAS AND PROJECTORS IN ONE OR MORE OF THE PUBLICATIONS LISTED BELOW.



The New York Times.

THE SATURDAY EVENING POST
An Illustrated Weekly
Founded A.D. 1774 by Benj. Franklin

Popular Photography
INTERVIEW

THIS WEEK
THE BOSTON HERALD
APRIL 25th

AMERICAN
MAGAZINE

Liberty 5¢
WHAT I THINK OF ROBERT TAYLOR by Clark Gable
MURDER LADY
by Whitman Chambers

POPULAR MECHANICS
MAY 25 CENTS
IS DIMAGGIO BASEBALL'S WONDER
THE NEW FACE OF LIBERALISM

KEYSTONE "8" mm
15¢ a Scene!
How dear TO YOUR HEART and EASY ON YOUR PURSE...
\$29.95 13.5 lens
KEYSTONE "8" mm
COLOR MOVIES

Start now to keep a living, full color record of the growth of the children. Take a moving picture of them every few months. The Keystone "8" with an F3.5 Wollensak lens is a precision built instrument of remarkable optical powers. This internationally famous movie camera makes pictures with perfect clarity and infinite detail in black and white or full color, using either Eastman or Ektachrome film. Sight through the finder, press the button, and your job as operator is done. The film is developed free of charge and returned to you postpaid. Pictures may be taken in three speeds, normal, low or slow motion. Keystone Mfg. Co. makes a complete range of moving picture cameras and projectors in both the 8 and 16 mm. Whether you choose the least expensive 8 mm. or the larger 16 mm. camera, there is no difference in precision workmanship, and all are light weight and smooth running. See your nearest Keystone dealer or write to us for complete information.

KEYSTONE MFG. CO., 250 A ST., BOSTON, MASS.

Collier's
WEEKLY
10¢
Old-Fashioned
Roses - in full color

AMERICAN HOME
CHILD REARING • FAMILY FUN • HOME DEVELOPMENT SECTION
PARENTS' MAGAZINE
April 1958
25 Cents

THE NATIONAL GEOGRAPHIC MAGAZINE
MAY 1958
25 CENTS

TIME
The Weekly Newsmagazine
MAY 1958
25 CENTS

KEYSTONE

TOY CATALOGUE 1939-1940

KEYSTONE MANUFACTURING COMPANY

288 A STREET

BOSTON, MASS.

NEW YORK SHOWROOM

200 FIFTH AVENUE